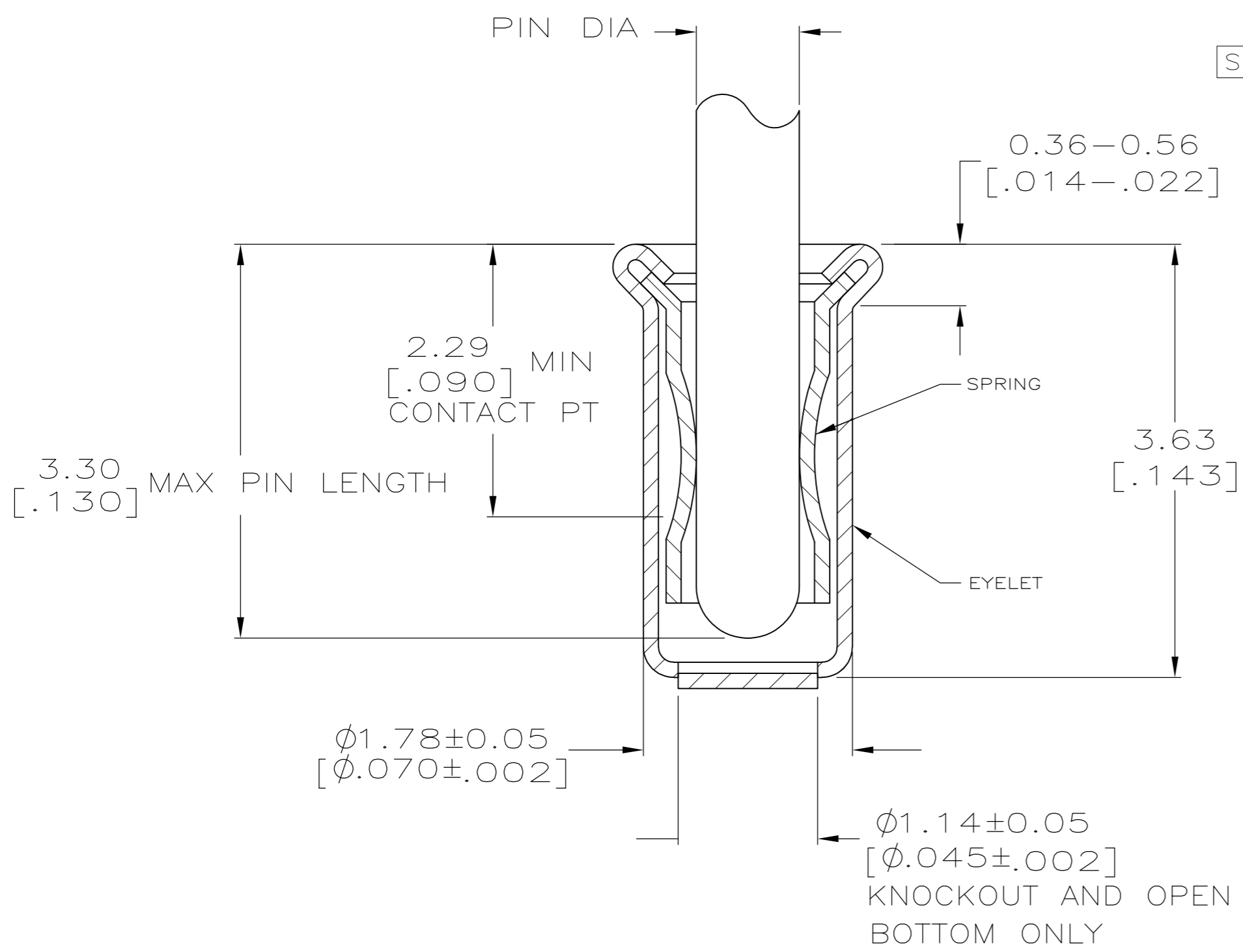
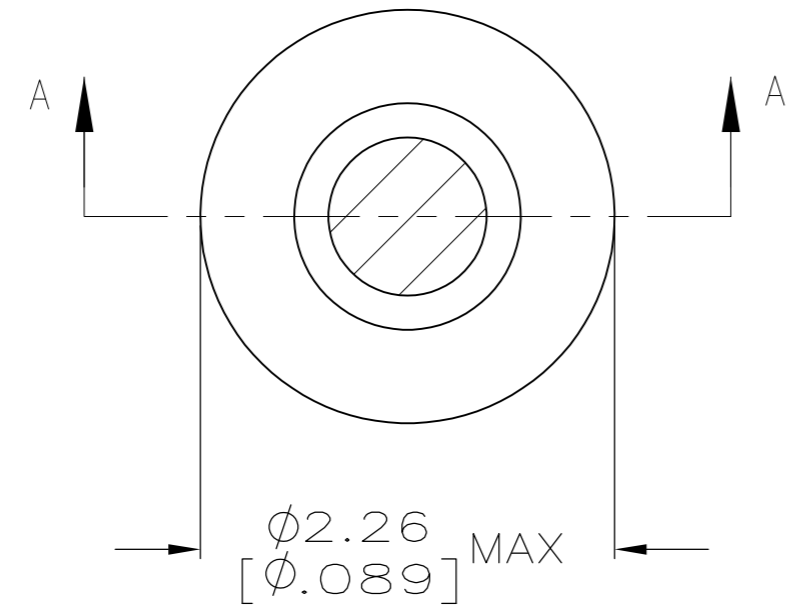


THIS DRAWING IS UNPUBLISHED. RELEASED FOR PUBLICATION
 © COPYRIGHT BY TYCO ELECTRONICS CORPORATION. ALL RIGHTS RESERVED.

LOC	DIST	REVISIONS			
P	LTR	DESCRIPTION	DATE	DWN	APVD
FT	64				
		AJ4 REVISED PER ECO-07-008358	27JUN07	DH	DB

- 1. TIN PER MIL-T-10727 OR TIN LEAD 0.00254 [.000100] MIN THK.
- 2. GOLD PER MIL-G-45204, TYPE II, 0.00076 [.000030] MIN THK OVER NICKEL PER QQ-N-290 0.00028 [.000011] MIN THK ON CONTACT AREA.
- 3. GOLD FLASH PER MIL-G-45204, TYPE II, 0.13μm [.000005] MIN THK. OVER NICKEL PLATE PER QQ-N-290 0.51μm-1.52μm [.000020-.000060] EXT THK.
- 4. TIN PER MIL-T-10727 OR TIN LEAD 0.00381 [.000150] MIN THK.
- 5. RECOMMENDED HOLE SIZE, PLATED OR UNPLATED:
 - MACHINE INSERTION: 1.83 ^{+0.10}/_{-0.08} [.072 ^{+0.004}/_{-0.003}]
 - HAND INSERTION: 1.83 ^{+0.10}/_{-0.00} [.072 ^{+0.004}/_{-0.000}]
- 6. APPLICATION TOOL PART NUMBER: MACHINE NO. 682127-5
INSERTION HEAD NO. 682039-4
- 7. TO INSURE PROPER SPRING TENSION DO NOT EXCEED A 0.05 [.002] DIFFERENCE IN PIN DIA WHEN CHANGING TO A SMALLER PIN.
- 8. BOTTOM PLUG KNOCKOUT TOOL PART NUMBER 69729 WITH TIP PART NUMBER 69728-2.
- 9. MATERIAL: SPRING: BERYLLIUM COPPER (QQ-C-533)
EYELET: COPPER (QQ-C-576)



OBSCLETE	OPEN	0.71-0.84 [.028-.033]	TIN 1	GOLD 2	4-332070-4
		0.94-1.02 [.037-.040]		GOLD 2	4-332070-3
SUPSD BY 1-332070-9					
OBSCLETE	KNOCKOUT	0.94-1.02 [.037-.040]	TIN 1	GOLD 2	3-332070-5
OBSCLETE				TIN 1	3-332070-4
SUPSD BY 50865-1					
	KNOCKOUT	0.76-0.84 [.030-.033]		TIN 1	3-332070-0
OBSCLETE		0.94-1.02 [.037-.040]		GOLD 2	2-332070-9
OBSCLETE				TIN 1	2-332070-8
OBSCLETE	OPEN	0.86-0.94 [.034-.037]		GOLD 2	2-332070-7
OBSCLETE				TIN 1	2-332070-6
OBSCLETE		0.76-0.84 [.030-.033]	TIN 1	GOLD 2	2-332070-5
OBSCLETE				TIN 1	2-332070-4
OBSCLETE		0.94-1.02 [.037-.040]		GOLD 2	2-332070-3
OBSCLETE	CLOSED	0.86-0.94 [.034-.037]		TIN 1	2-332070-2
OBSCLETE		0.76-0.84 [.030-.033]		GOLD 2	2-332070-1
OBSCLETE				TIN 1	2-332070-0
OBSCLETE	KNOCKOUT	0.94-1.02 [.037-.040]		GOLD 2	1-332070-9
OBSCLETE		0.94-1.02 [.037-.040]		TIN 1	1-332070-8
OBSCLETE	OPEN	0.86-0.94 [.034-.037]		GOLD 2	1-332070-7
OBSCLETE		0.76-0.84 [.030-.033]	GOLD 3	GOLD 2	1-332070-4
OBSCLETE		0.94-1.02 [.037-.040]			1-332070-3
OBSCLETE	CLOSED	0.86-0.94 [.034-.037]			1-332070-2
OBSCLETE		0.94-1.02 [.037-.040]			1-332070-1
OBSCLETE		0.76-0.84 [.030-.033]			1-332070-0
					332070
	BOTTOM TYPE	RECOMMENDED PIN DIA 7	EYELET	SPRING	PART NO
			FINISH		

SECTION A-A

KNOCKOUT AND OPEN BOTTOM ONLY

THIS DRAWING IS A CONTROLLED DOCUMENT. DWN 4-5-91 R. TALLEY
 CHK 8-5-91 R. MILLER
 APVD 8-22-91 S. ROBERTSON
 PRODUCT SPEC
 APPLICATION SPEC
 WEIGHT -
 CUSTOMER DRAWING

Tyco Electronics Corporation
 Harrisburg, PA 17105-3608

MINIATURE SPRING SOCKET ASSEMBLY, SERIES 4

SIZE A2 CAGE CODE 00779 DRAWING NO C-332070 RESTRICTED TO -
 SCALE 20:1 SHEET 1 OF 1 REV AJ4